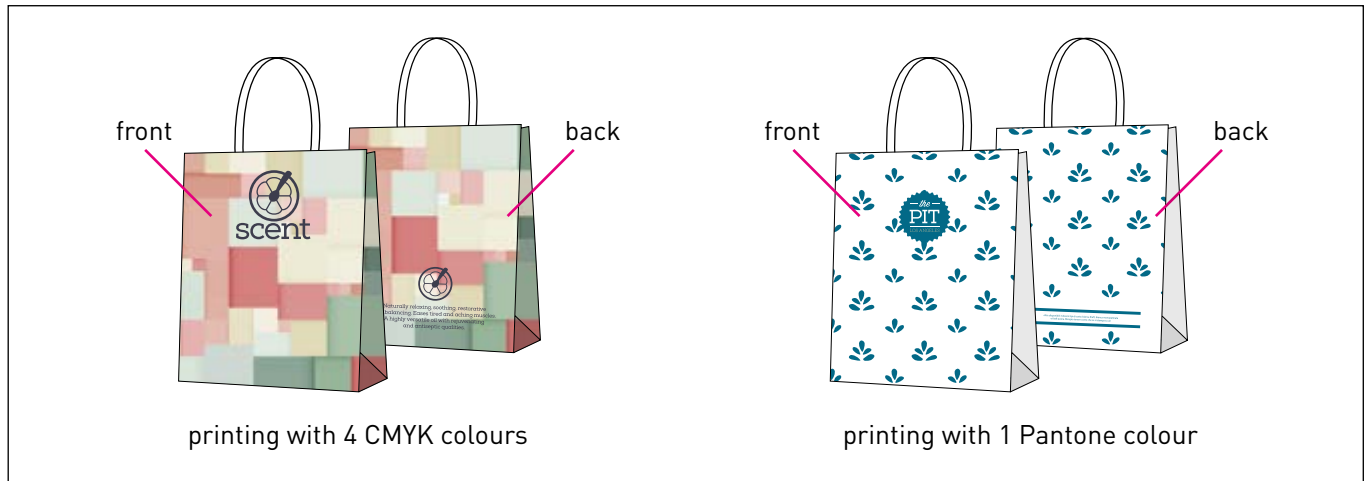


## HOW TO CREATE A PRINT-READY FILE: ALL-OVER PRINT BAGS (paper bags printed with offset printing)

The following instructions are designed to help you create a print-ready file. If after reading them you are still unsure about anything, please download the template, visit the FAQ section of our website, request a professional File Check or contact customer support.

With this type of product you can print your artwork over the entire surface of the shopping bag. The bag is **printed using offset printing in a single Pantone colour or in four CMYK colours**.



### 1 FILE FORMAT

Our systems can only process files in **PDF format and in 1:1 scale** (not password-protected).

### 2 COLOURS

All files should be sent in **CMYK** (cyan, magenta, yellow, black) format with the **Fogra 39 colour profile**. Images in RGB or with PANTONE colours will be converted automatically using a standard colour separation profile.

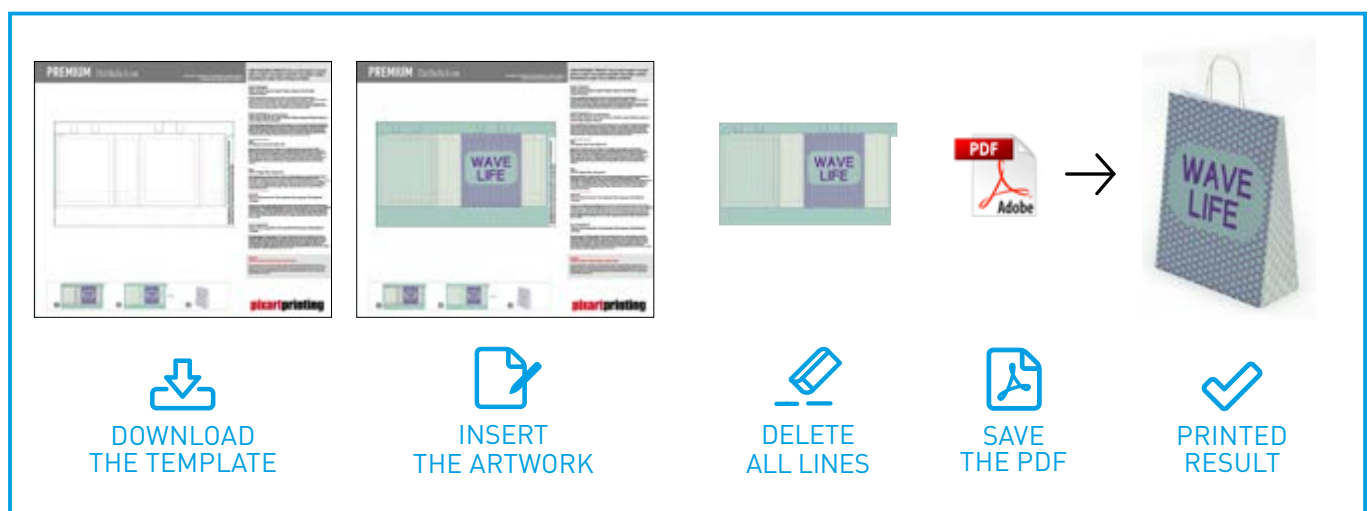
**The same colour may vary slightly in appearance depending on the** media onto which it is printed, as a result of the material's physical composition and the **base colour of the shopping bag**. For example, if you print a design onto a brown bag, the colour will be darker and duller than if it were printed onto a white bag.

### 3 RESOLUTION

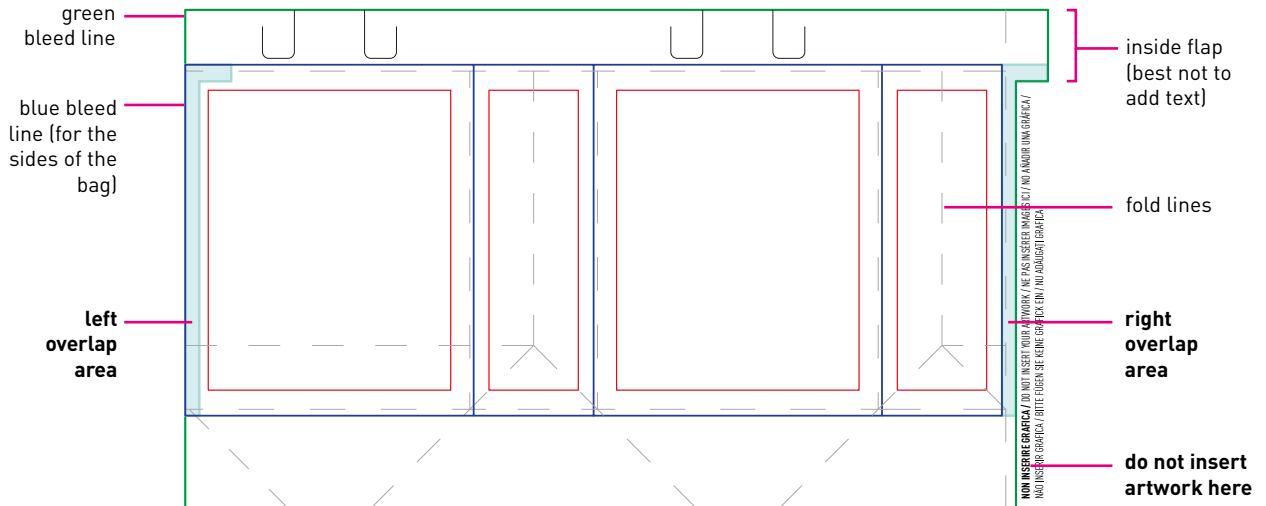
The optimal resolution for the files is **between 250 and 300 dpi**.

### 4 TEMPLATE

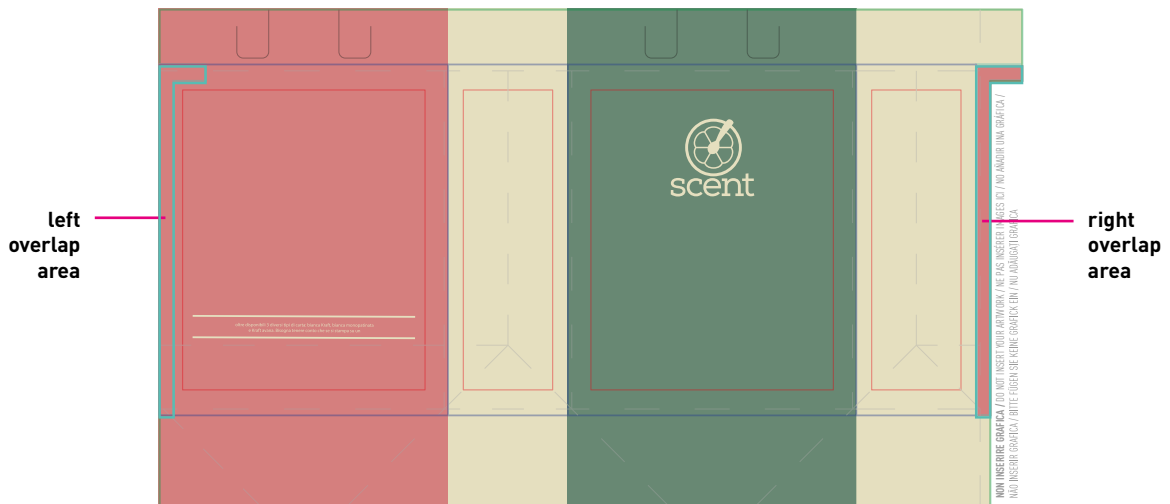
Always download the template for the product you purchased from the website and use it as the basis for positioning your artwork: this will make it easier to create a print-ready file. **Insert your artwork on the 'Artwork' layer, delete all the guidelines** and save the file as a PDF. Do not alter the scale of the design or **resize the template**. We recommend that any important text or messages are placed within the safe area (red line), i.e. at least 15 mm from the folds (dotted grey line).



## Template



## Template with artwork added



Offset printing is carried out on a flat sheet of paper which is then folded and glued into the finished bag shape. This process requires some precautions when positioning the artwork on the template: **it is very important that the artwork in the left overlap area is copied exactly into the right overlap area, to ensure the continuity of the design on the bag.** When the bag is assembled, these two parts will be glued on top of one another.

## Assembled and glued bag



overlapping and glued area

## 5 ADDITIONAL INFORMATION

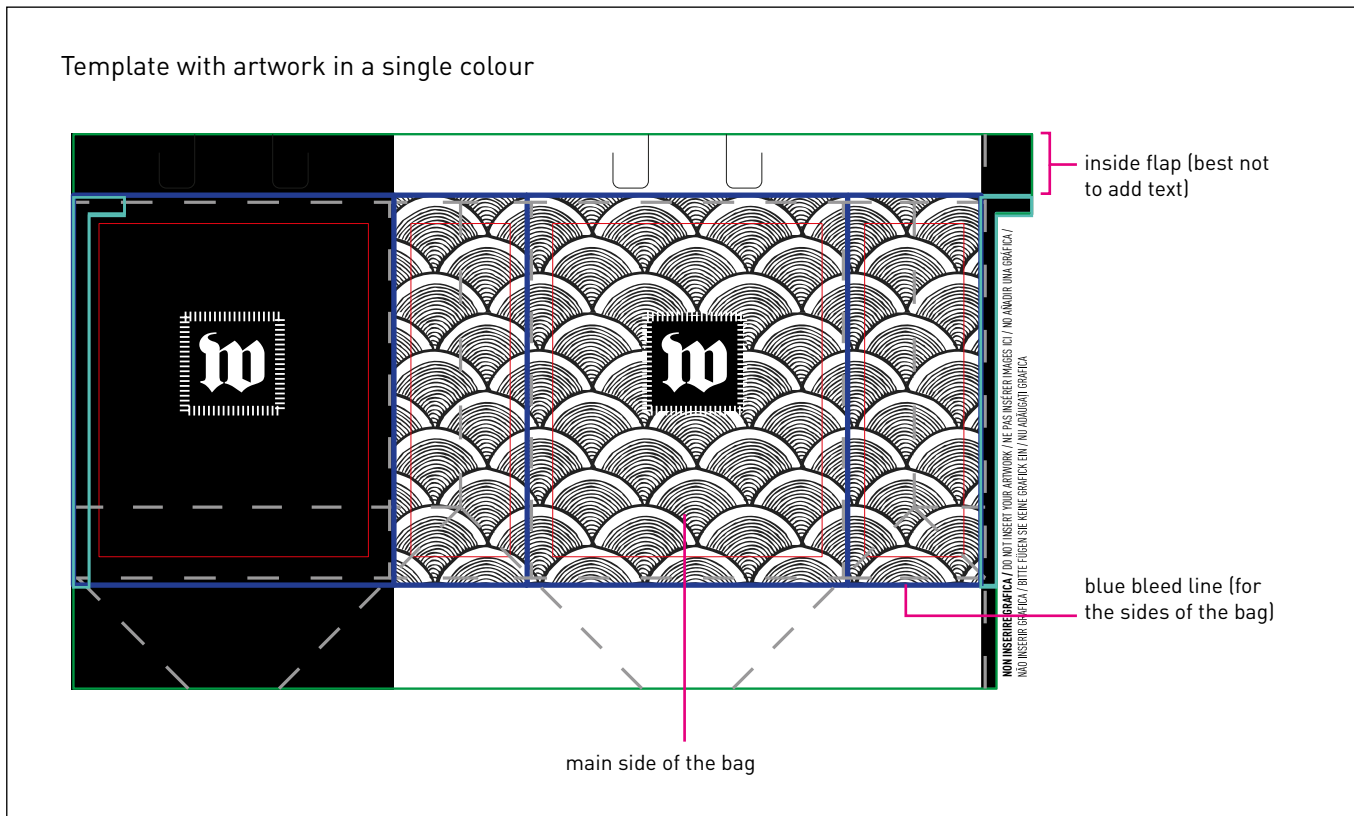
The minimum printable line weight is 0.25 pt. The main side of the bag is the section in the centre of the template.

**If you want full bleed artwork on the sides** of the shopping bag, enter your artwork inside the blue bleed line, and therefore beyond the folds of the bag (dotted grey line).

**If you have chosen single-colour printing, give your artwork a solid black colour (K 100% only).**

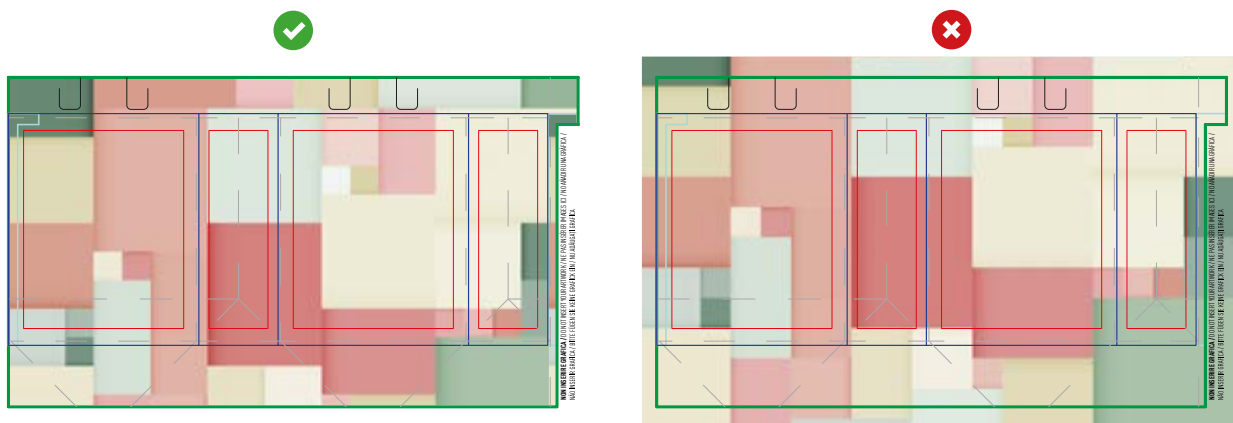
The shopping bag will then be printed in the colour you chose when ordering.

We do not recommend entering text on the inside flap of the bag, as the handles will be applied to this area.

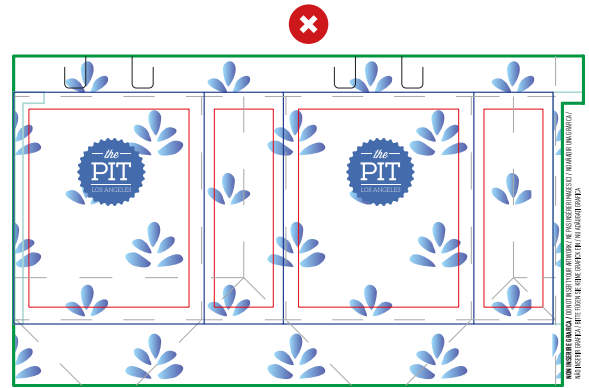
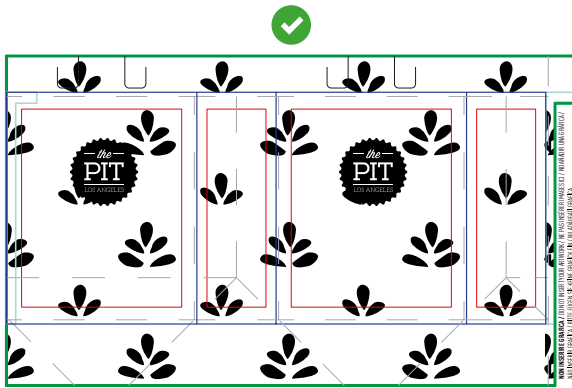


## PLEASE NOTE - offset printed bags

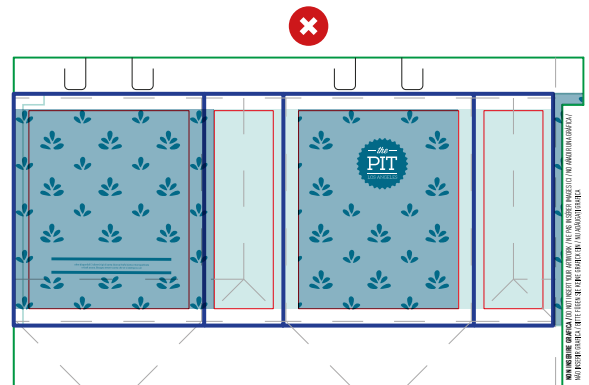
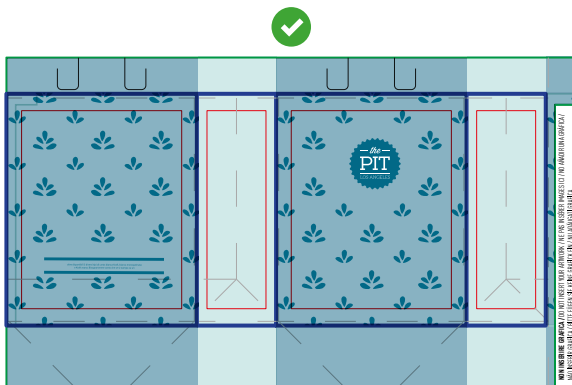
Insert the artwork within the bleed line on the template (use the green line as a clipping mask)



🔑 For single-colour printing, give your design a solid black colour (K 100% only).



🔑 For a full bleed image on the sides of the shopping bag, enter your artwork within the blue bleed line.



🔑 Always copy the artwork in the left overlap area of the template (the blue strip on the left-hand side) into the right overlap area (the blue strip on the right-hand side) to ensure the continuity of the design on the bag.

